

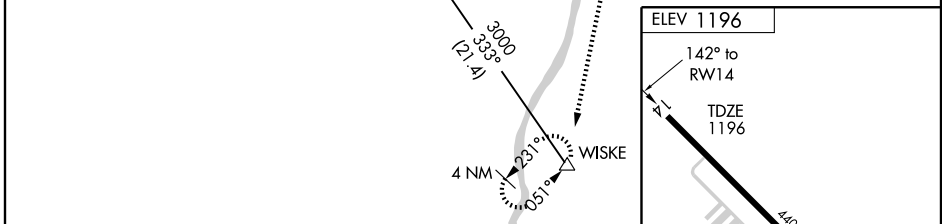
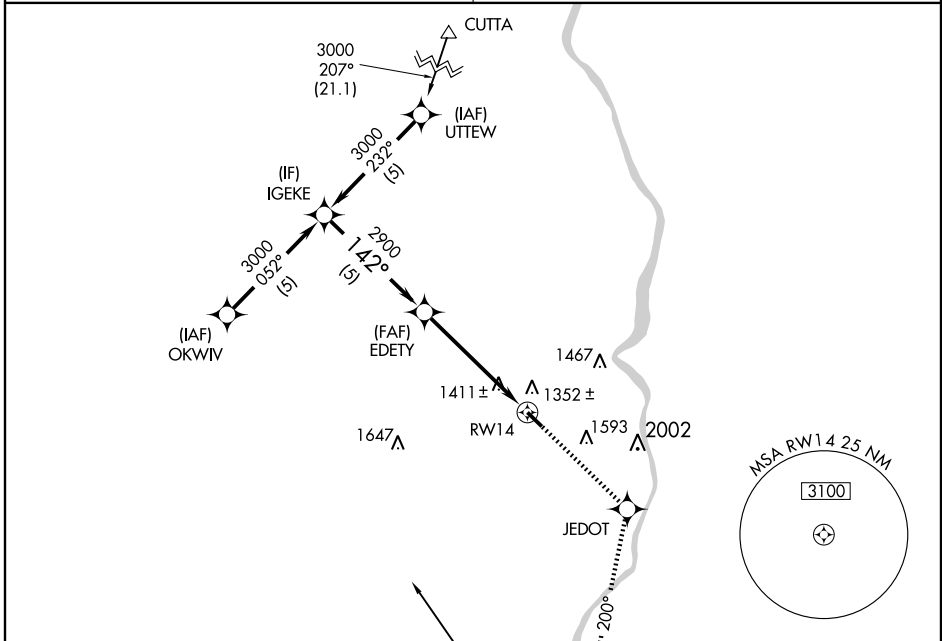
APP CRS	Rwy Idg	4400
142°	TDZE	1196
	Apt Elev	1196

RNAV (GPS) RWY 14

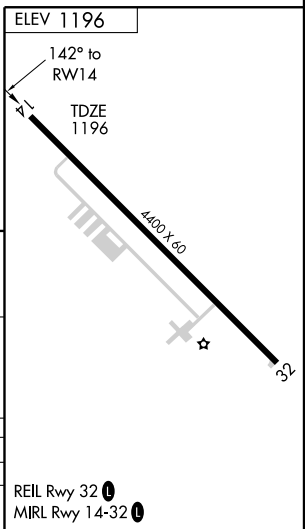
STUBENVILLE/JEFFERSON COUNTY AIRPARK (2G2)

<p>▽ DME/DME RNP-0.3 NA. Visibility reduction by helicopters NA. Use Wheeling altimeter setting, when not received, use</p> <p>▲ NA Pittsburgh International altimeter setting and increase all MDA 40 feet.</p>	<p>MISSED APPROACH: Climb to 3100 direct JEDOT and on track 200° to WISKE and hold.</p>
--	---

<p>PITTSBURGH APP CON</p> <p>124.750 338.2</p>	<p>UNICOM</p> <p>122.8 (CTAF)</p>
---	--



<p>Procedure Turn NA</p> <p>3000</p> <p>142°</p> <p>2900</p> <p>3.04° TCH 40</p> <p>5 NM</p> <p>5.2 NM</p>	<p>IGEKE</p>	<p>EDETY</p>	<p>3100</p>	<p>JEDOT</p>	<p>200° tr</p>	<p>WISKE</p>
	<p>CATEGORY</p>	<p>A</p>	<p>B</p>	<p>C</p>	<p>D</p>	<p>NA</p>
<p>LNAV MDA</p>	<p>1760-1</p>	<p>564 (600-1)</p>	<p>NA</p>	<p>NA</p>	<p>NA</p>	<p>NA</p>
<p>CIRCLING</p>	<p>1780-1</p> <p>584 (600-1)</p>	<p>1800-1</p> <p>604 (700-1)</p>	<p>NA</p>	<p>NA</p>	<p>NA</p>	<p>NA</p>



EC-2, 03 JUN 2010 to 01 JUL 2010

EC-2, 03 JUN 2010 to 01 JUL 2010